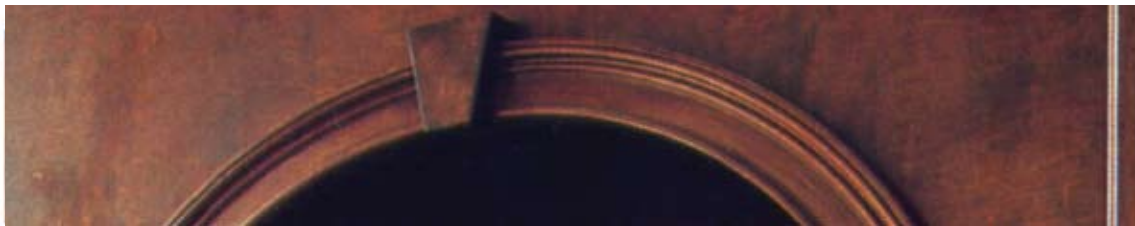
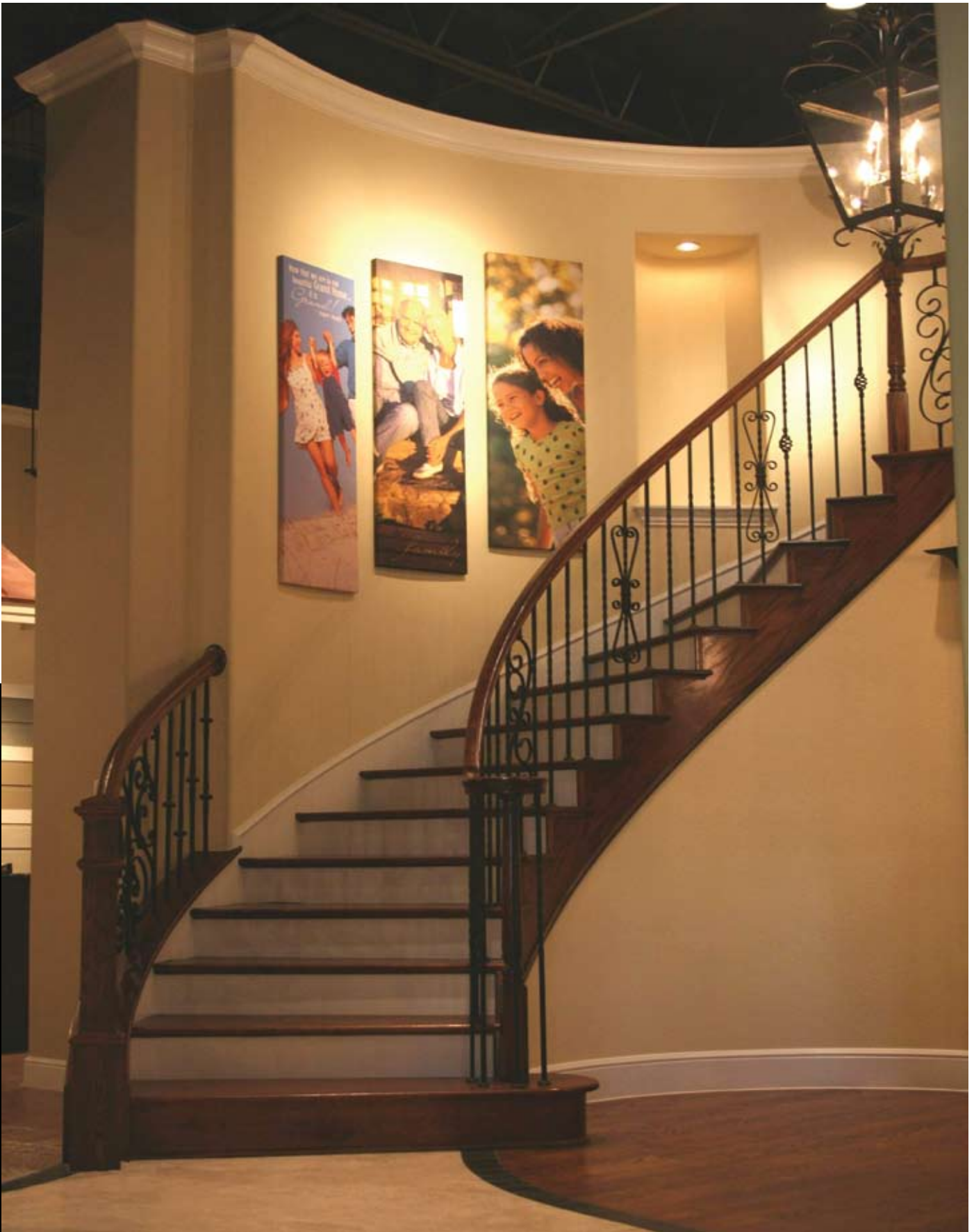




ENHANCEMENTS | FLEXIBLE TRIM



Flexible resin that finishes like real wood. Imagine architectural moulding that flexes to easily fit radius contours and shapes. This hand moulded, firm yet flexible, high-density space age polymer resin can do precisely that.



ENHANCEMENTS | FLEXIBLE TRIM

ENHANCEMENTS | FLEXIBLE TRIM

DURAFLEX™ The Original Flexible Moulding, and Xtra-Flex Wide Profiles

Duraflex™ – The Original Flexible Moulding since 1967 is an exclusive product of ResinArt. This catalog illustrates many popular styles of moulding, but these are only a portion of the 8,000 patterns we offer. Ask a sales representative for a catalog of flexible mouldings. Locate and match your actual wood moulding to the illustrated full scale drawing.

When ordering please specify the part number, length – (lineal feet) and surface; smooth finish, oak or pine texture. Duraflex™ is the easy economical alternative for radius installations and because of its quality, flexibility and superior longevity it is unequaled by wooden millwork.

THE ADVANTAGES OF DURAFLEX™ AND XTRA-FLEX:

- The appearance of real wood.
- Ease of installation using standard woodworking equipment - cut, sand, shape, and finish like wood.
- Seamless construction without lamination defects.
- Painting: Most standard paints are compatible. Primer coats are often unnecessary.
- Staining: Use a heavily pigmented stain and finish with a clear coat.
- Can accommodate VIRTUALLY ANY RADIUS WHICH IS 3 TIMES A PROFILE WIDTH OR GREATER.
- Moisture proof. Insect proof.
- Xtra-Flex is recommended for profiles 6" or wider due to a 0% shrinkage factor.

If you don't find the moulding that you are looking for ResinArt can produce custom moulding from your wooden original. We can also work from tracing - (paper pattern) for any arch, circular window, curved wall or curved frame.



General Product Information & Guidelines

PAINTING

Painting can be done with all paints such as Latex, Enamel, Waterbase and Oils. Best results are seen when a primer coat is applied. When using Alkyd Enamels or Oil based enamels a waterbase or Latex undercoat is required. Alkyd Enamels and Oil based enamels may not dry properly if an undercoat is not used. Waterbase enamel can be used as a primer.

STAINING

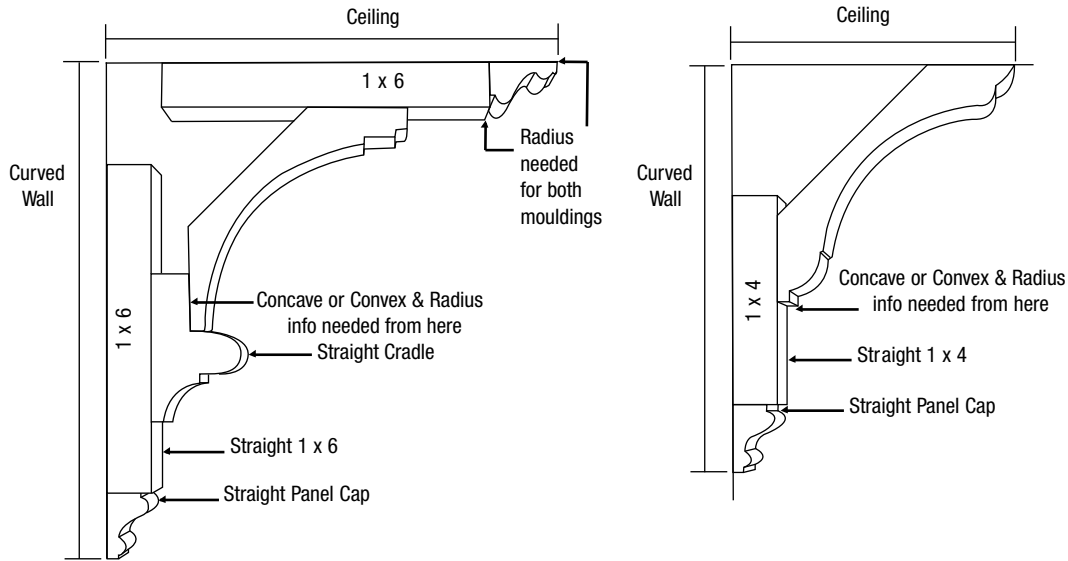
Staining is achieved with glazes. Some colored glazes are prepackaged by manufacturers for this purpose. Clear glazing liquid mixed with tints and stains is another option to customize colors.

A simpler solution is "GEL" stains made by ZAR, MINWAX, and WOOD-KOTE. These are designed to work on synthetic surfaces. Clear coats must be applied after staining. To achieve certain shades and colors, a base color coat may need to be applied before glazing. Base color coats as RED-BEIGE, or MUSTARD YELLOW or MED. BROWN have major effects on over-all look after glaze is applied.

General Product Information And Guidelines

HOW TO ORDER BUILD UP DETAILS

Understanding what Radius information is needed and which details will be made straight:

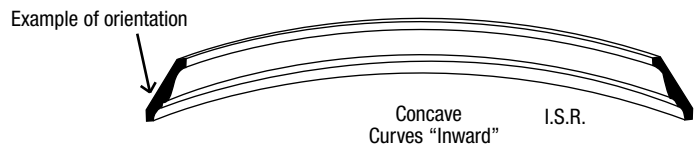
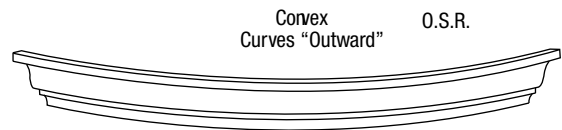
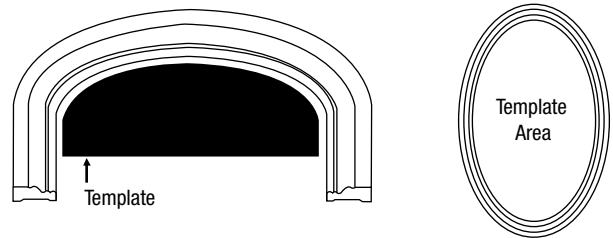


Templates Required For Ovals, Elliptical, and Irregular Radius Crown

RADIUS CROWN AND DORMER APPLICATIONS

What we need to know:

- Supply radius dimension of wall or radius to outside edge of Dormer.
- Any curved segment dimension should be converted to a radius.
- ISR (Inside Radius) wall curves away from you.
- OSR (Outside Radius) wall curves toward you.
- Dormer application is always an OSR.
- Profile or description confirming crown orientation on wall (i.e., position on wall)
- Calculate length needed and add extra footage for waste, to trim and install.



ENHANCEMENTS | FLEXIBLE TRIM

Flexible Limitations & Ranges Of Movement

STRAIGHT BASE OR CASING BENDING AGAINST THICKNESS

Applications bending against the smaller dimension usually the 1/2" - 1-1/2" thick (i.e. Base with measurements 5/8 x 4-1/2) will bend easily in the direction of the lesser dimension with no pre-curling necessary.

Minimum radius 10".

Product has a tendency to cup when bent too tight on wall.

Moulding will not bend around 3/4" or 1-1/2" bullnose corners.

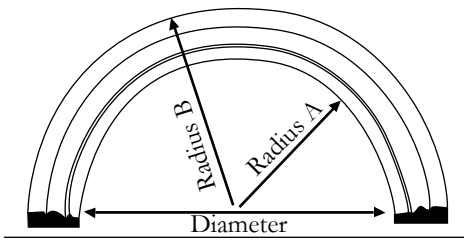
STRAIGHT CROWN

NOT ADVISABLE. Customer should supply radius information to allow Resinart to confirm if straight will work.

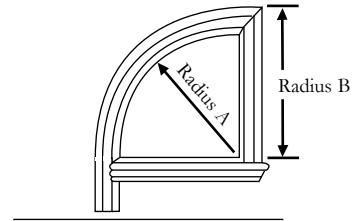
MEASURING

Calculate approximate lengths needed using radius B in inches and round up to nearest foot.

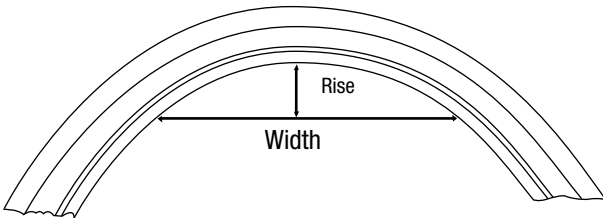
Use Radius A and Width A dimension for ordering actual part.



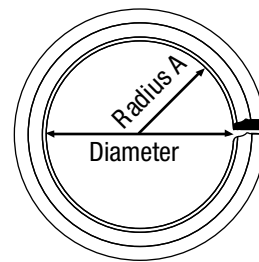
Radius B (x) 3.14 (÷) 12 = minimum length needed



Radius B (x) 3.14 (÷) 2 (÷) 12 = minimum length needed



Rise (x) 2 (+) Width = minimum length needed



Diameter (x) 3.14 (÷) 12 = minimum length needed



ENHANCEMENTS | FLEXIBLE TRIM

ENHANCEMENTS | FLEXIBLE TRIM



ENHANCEMENTS | FLEXIBLE TRIM

